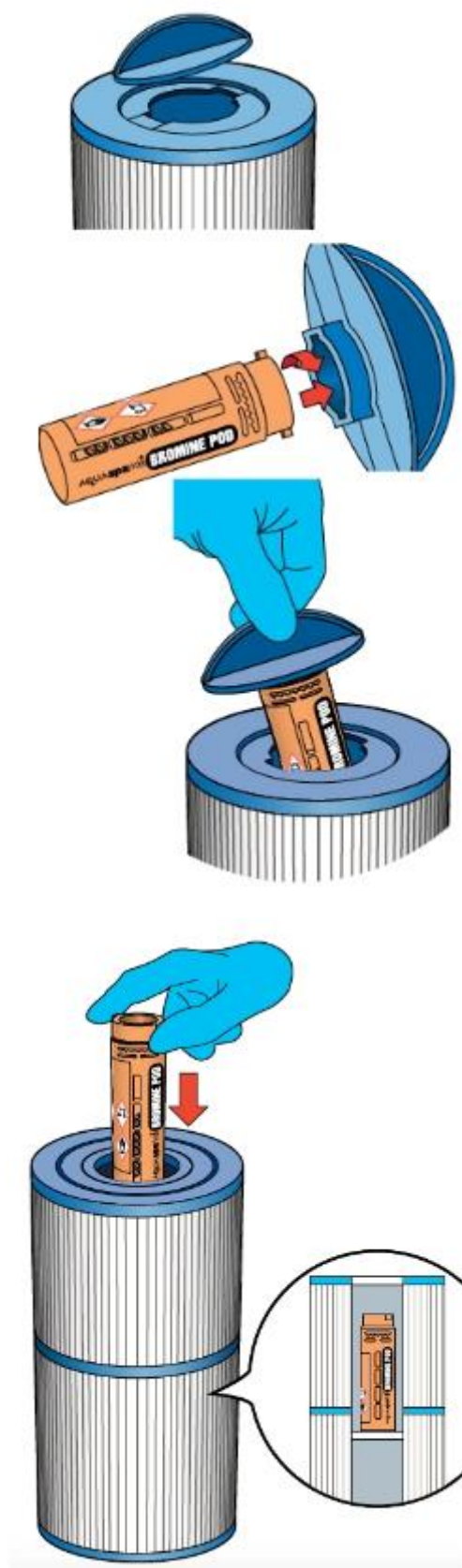


USAGE INSTRUCTIONS - FILTER WITH CAP & HANDLE



1. Remove the blue cap from the Darlly Direct Line filter by rotating it anticlockwise and pulling until the cap comes away from the filter.

2. Take a Darlly SpaPod chemical tablet. Unscrew the cap of the SpaPod dispenser and put to one side.

3. Using protective gloves and eye protection, add either chlorine or bromine tablets of a suitable size up to the top of the holes in the body of the SpaPod. Use only chlorine OR bromine, NEVER mix different chemicals together in the SpaPod.

NB: Some hot tub manufacturers do not permit the use of Trichloroisocyanurate ("Trichlor") tablets in their hot tubs, so check your hot tub's manual and warranty documentation to confirm which sanitisers your manufacturer recommends and/or prohibits. Darlly Europe and its agents, distributors, and partners are not responsible for any damage caused by the misuse of chemicals.

4. Replace the cap back on to the SpaPod by screwing it on until finger tight.

5. Replace the filled SpaPod back into the blue filter cap by locating the two lugs in their corresponding slots and twisting the SpaPod until it locks.

6. If this is the first time you're using your SaniStream Direct Line Filtration system, adjust the outer sleeve of the SpaPod dispenser so that half the large holes are exposed.

7. Replace the blue cap with the attached SpaPod into the top of the filter by locating the two lugs in their corresponding slots and twisting the cap clockwise until it locks.

8. Replace the filter back into your hot tub and turn the power on.

9. Check your bromine or chlorine levels daily using a quality test kit. Maintain bromine levels between 4 to 6 mg/l (ppm), or chlorine levels between 3 to 5 mg/l (ppm). If sanitiser levels are too low, rotate the outer sleeve of the SaniStream dispenser to expose more holes. This will result in more sanitiser being released into your hot tub water. Re-test the water daily and repeat the process until correct sanitiser levels can be maintained. If sanitiser levels are too high, rotate the outer sleeve of the SaniStream dispenser to expose fewer holes.

This will result in less sanitiser being released into your hot tub water. Re-test the water daily and repeat the process until correct sanitiser levels can be maintained.

USAGE INSTRUCTIONS - FILTER WITH OPEN ENDS

1. Take a Darlly SpaPod chemical tablet dispenser. Unscrew the cap of the SpaPod dispenser and put to one side.
2. Using protective gloves and eye protection, add either chlorine OR bromine tablets of a suitable size up to the top of the holes in the body of the SpaPod . Use only chlorine OR bromine, NEVER mix different chemicals together in the SpaPod .
NB: Some hot tub manufacturers do not permit the use of Trichloroisocyanurate ("Trichlor") tablets in their hot tubs, so check your hot tub's manual and warranty documentation to confirm which sanitisers your manufacturer recommends and/or prohibits. Darlly Europe and its agents, distributors, and partners are not responsible for any damage caused by the misuse of chemicals.
3. If this is the first time you're using your SaniStream Direct Line Filtration system, adjust the outer sleeve of the SpaPod dispenser so that half the large holes are exposed.
4. Place the filled SpaPod back into the filter by lowering it down into the top of the filter until it rests on the SpaPod retaining plate a few inches down.
5. Replace the filter back into your hot tub and turn the power on.
6. Check your bromine or chlorine levels daily using a quality test kit. Maintain bromine levels between 4 to 6 mg/l (ppm), or chlorine levels between 3 to 5 mg/l (ppm). If sanitiser levels are too low, rotate the outer sleeve of the SpaPod dispenser to expose more holes. This will result in more sanitiser being released into your hot tub water. Re-test the water daily and repeat the process until correct sanitiser levels can be maintained. If sanitiser levels are too high, rotate the outer sleeve of the SpaPod dispenser to expose fewer holes. This will result in less sanitiser being released into your hot tub water. Re-test the water daily and repeat the process until correct sanitiser levels can be maintained.

WEEKLY FILTER CLEANING INSTRUCTIONS

1. On a weekly basis, turn off the power to your hot tub and remove your Darlly SaniStream Direct Line Filtration system from your hot tub.
2. Take the SpaPod chemical dispenser out of the filter and place into a dry plastic bucket or bowl.
3. Take the filter and, using a garden hose set to its highest pressure, squirt water between the pleats, systematically working through all the pleats from top to bottom to flush out all dirt and debris. Alternatively, for a really deep and more efficient clean, use the Darlly Cyclone filter cleaning attachment.
4. Replace the SpaPod chemical dispenser back into the filter.
5. Replace the complete Darlly SaniStream Direct Line Filtration system back into your hot tub and turn the power back on.

REFILLING THE SPAPOD

Whilst the filter is out of your hot tub for its weekly clean, it's a good opportunity to check the condition of the sanitiser tablets inside the SpaPod . The tablets will gradually erode as they dissolve and add sanitiser to your hot tub's water. As space is created in the SpaPod by the dissolving tablets, fresh tablets should be added to ensure that adequate levels of sanitiser are maintained in your hot tub water. Never

let the sanitiser tablets dissolve away completely so that the SpaPod becomes empty.

Always remember to use protective gloves and eye protection when inspecting and refilling the SpaPod and always add the same tablets to the SpaPod as those already in there. Use only chlorine OR bromine, NEVER mix different chemicals together in the SpaPod . Take care when handling the SpaPod as a solution of concentrated sanitiser can drip out. Therefore, it's always best to do this over a dry plastic bucket so that drips do not end up on skin, clothing, or any surface which would otherwise be damaged by it. Always inspect and refill the SpaPod in a well-ventilated area.

KEEP ALL HOT TUB CHEMICALS IN THEIR ORIGINAL CONTAINERS AND SAFELY AWAY FROM CHILDREN AND ANIMALS. ALWAYS FOLLOW THE CHEMICAL MANUFACTURER'S INSTRUCTIONS ON THE PACKAGING.

MONTHLY FILTER CLEANING INSTRUCTIONS

1. Once a month, or more often as necessary, especially if flow to the jets is impaired or your hot tub displays an insufficient flow error, turn the power to your hot tub off and remove the Darlly SaniStream Direct Line Filtration system from your hot tub.
2. Remove the SpaPod chemical dispenser from the filter and place in a dry plastic bucket or bowl.
3. Take the filter and, using a garden hose set to its highest pressure, squirt water between the pleats, systematically working through all the pleats from top to bottom to flush out all dirt and debris. Alternatively, for a really deep and more efficient clean, use the Darlly Cyclone filter cleaning attachment (part no. SC785). Do this to remove as much loose dirt and debris as possible.
4. Then, completely immerse the filter for 24 hours in a quality filter cleaning solution, such as SC796 Darlly Filter Cleaner, following the filter cleaner manufacturer's instructions. **DO NOT UNDER ANY CIRCUMSTANCES IMMERSE THE FILTER IN THE FILTER CLEANING SOLUTION WITH THE SPAPOD DISPENSER STILL INSTALLED WITHIN IT AS AN EXPLOSION AND THE RELEASE OF TOXIC GASES MAY RESULT.**
5. After 24 hours, remove the filter from the filter cleaning solution and rinse in cold water to wash away as much of the filter cleaning solution as possible, taking care not to splash any solution onto your person or clothing.
6. Leave the filter somewhere warm to dry out completely, at least 24 hours, but ideally a week. It's a good idea to have a second filter that you can replace back into the hot tub while the other is being cleaned and dried on a monthly rotation basis. **NEVER** run your hot tub without a filter installed.
7. When the filter is completely dried out, replace the SpaPod dispenser back into the filter.
8. Replace the complete Darlly SaniStream Direct Line Filtration system back into your hot tub and turn the power back on.